

# 1000A 3-Phase Power & Harmonics Analyzer

**For power measurements and analysis**  
Of single and 3-phase/3-wire or 3-phase/4-wire systems

## Features:

- Large backlighting LCD displays up to 35 parameters in one screen (3P4W)
- Clamp-on True RMS power measurements with on-screen Harmonics display (1-99th order)
- Simultaneous display of Harmonics and Waveform
- Display of Waveform with Peak Values (1024 samples/period)
- Analysis of Total Harmonic Distortion (THD-F)
- Displays Active Power (kW), Apparent Power (kVA), Reactive Power (kVAR) and Power Factor
- kWh and kVARh energy measurements
- Maximum Demand (MDkW, MW, kVA, MVA) with programmable period
- Adjustable CT ratio (1 to 600) and VT ratio (1 to 3000)
- Graphic Phase diagram with 3-Phase system parameters
- 3-phase Voltage or Current Unbalanced Ratio (VUR, VIR) and Unbalanced Factor (d0%, d2%)
- Calculated Unbalanced Current through Neutral Line (In)
- Datalogger records up to 52428 records in single phase, (17476 records in 3-phase)
- Capture 28 Transient events (including Dip, Swell and Outage) with programmable threshold (%)
- Optically isolated RS-232 interface with software to download Waveforms, Power Parameters and Harmonics
- Complete with (3) 1000A current clamps, 4 voltage leads with alligator clips, 8 AA batteries, AC adaptor, software, PC interface cable, and carrying case.



Complete with (3) 1000A current clamps, 4 voltage leads with alligator clips, 8 AA batteries, AC adaptor, software, PC interface cable, and carrying case

Specifications	Range Basic Accuracy
ACV (True rms)	600V ±(0.5%rdg+5d)
ACA	1000A ±(0.5%rdg+5d)
Active Power (kW)	9.999MW ±(1%rdg+8d)
Apparent Power (kVA)	9999kVA VA=Vrms x Arms
Reactive Power (kVAR)	9999kVAR VAR= sqrt (VA-W <sub>2</sub> )
Power Factor	0.0 to +1.00 ±(1.5%°rdg±8d)
Frequency	45-65Hz 0.1Hz
Phase	-180.0°~ 0°~ +180.0° ±1°
Harmonics	1 to 99 ±2%
Crest Factor	1.00 to 99.99 ±(5%+30d)
Peak AC Voltage accuracy	±(5%rdg+30d)
Peak AC Current accuracy	±(5%rdg+30d)
Active Power Energy (kWh)	0mWh to 999,999kWh
Reactive Power Energy (kVARh)	0.0kVARh to 1000MWh
Datalogging	52428 records (single phase)/17476 records (3 phase)
Dimensions	10.1 x 6.1 x 2.3" (257 x 155 x 57mm)
Weight	Meter: 2.5 lbs (1160g); Clamp: 1.3 lbs (600g)



Optional 3000A Flexible Current Clamp Probes 24" (610mm) long for wrapping around busbars (Model 382098)



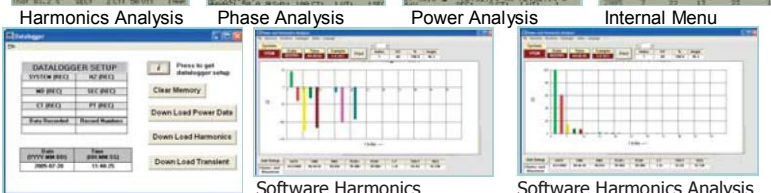
Optional 100A Current Clamp Probes (Model 382097) with 1.2" (30mm) jaw size

## Ordering Information:

**382095** .....1000A 3-Phase Power Harmonics Analyzer (110V)  
**382096** .....1000A 3-Phase Power Harmonics Analyzer (220V)

### Accessories

**382000** .....Voltage Test Leads with Alligator Clips (4 leads)  
**382097** .....100A Current Clamp Probes (Set of 3)  
**382098** .....3000A, Flexible Current Probes (Set of 3)  
**USB100** .....RS-232 to USB Adaptor



Software included to download, store data and display on a PC

สนใจติดต่อ บริษัท เอเม็ท จำกัด โกสุมร่วมใจ 31 ซอย 37 แยก 2 คอนเมือง กทม 10210

โทร.02-5038900 , 02-5038929, แฟกซ์ : 02-9810181 , Email : sales@amet.net , Web: www.amet.net

